

Share your views on the Heysham to M6 Link

Welcome to the second issue of *The Link*, the official newsletter for Lancashire County Council's major project, the completion of the Heysham to M6 link road. This edition of *The Link* will explain how the new Infrastructure Planning Commission (IPC) planning process will work, provide you with details of the public exhibitions and where you can find information about the proposal. This latest step follows the government's 'green light' on changes to the Heysham to M6 Link and a firm offer of government funding.

The Heysham to M6 Link is one of the largest road building projects currently being managed by a local authority in England. The new road, which will bring huge economic and transport benefits to the county, has long been the council's highest priority major infrastructure project.

The Heysham to M6 link road will attract investment in the area

by providing better access to Morecambe and industrial areas on the peninsula and, along with additional measures to manage traffic as part of the scheme, will reduce congestion through Lancaster city centre.

The scheme will also bring ongoing regeneration benefits. Construction alone will employ over 3,000 people. In the region of 100 local unemployed people will receive training and jobs during construction.

Back in February, the Department for Transport accepted the council's 'best and final' funding bid after asking for the total cost of the scheme to be reduced as a result of the government's Comprehensive Spending Review.

Changes to the scheme mean that an application will need to be submitted to the IPC for an amended planning permission and confirmation of the required legal orders, such as the order for the purchase of the land required.

The application to the IPC will be made in the Autumn following the consultation.

The IPC is an independent public body responsible for the assessment and approval of nationally significant infrastructure projects. It is likely that the Heysham to M6 Link will be the first road scheme progressed through this new process. You can find more information at www.infrastructure.independent.gov.uk.

The new planning process will mean construction is now estimated to begin in Summer 2013.



Proposals include a Park and Ride at Junction 34.

Recent changes to the design are:

- Shefferlands roundabout – this was previously in a 14m deep cutting but has now been brought up to existing ground level. This means that, where the new road previously went under Halton Road, it will now go over it.
- Minor changes have been made to the alignments of the slip roads for the M6 which will reduce the amount of land taken whilst still improving the alignment and safety of the new M6 junction. This change also removes the need to reconstruct Grimeshaw Lane Bridge to the south, or widen Caton Road Bridge, minimising disruption to road users.
- Street lighting has been reduced on the scheme, with only the major junctions being lit where there will be pedestrians or cyclists. These include the Morecambe Road junction, Shefferlands Roundabout and Caton Road junction. Reducing the lighting saves future energy costs and reduces visual intrusion.



Have your say!

Before submitting an amended application, the county council will be holding additional public consultations on the design changes to the Heysham to M6 Link. The latest consultation events, which will take place in June will update you (local residents and businesses) on changes to the scheme and provide you with more information about the plans, giving you an opportunity to influence and shape the design before we submit it for approval to the IPC. You can also help shape the final application by commenting online, writing to us or getting in touch via email (closing date for receiving your comments – 31 July 2011).

We would like to hear your views on the proposals, in particular:

- Changes to the scheme
- Junction layouts
- Drainage
- Landscape proposals
- Managing traffic on existing roads during construction
- Locations of our construction compounds
- Access to the site during construction
- Construction sequence.

Additional consultations are continuing to take place with residents, others directly affected by the changes and those living near the route.

Following the public consultation, we will take on board your suggestions and comments, and where appropriate, incorporate them into the proposals before we submit an application to the IPC for consideration. The IPC will then examine the application before making a recommendation to the Secretary of State whether to grant permission to progress with the development.

Once the formal application is submitted opportunity to change the plans will be limited. Your best opportunity to be involved is by participating in the pre-application phase.

The closing date for comments to be received as part of the consultation is 31 July 2011.

Come along to our events

We would like to hear your comments at these events whilst we can still incorporate changes into the design. The events will also give you an opportunity to comment and suggest possible improvements to protect or enhance your community and, because the scheme is now a lot further developed, we can also show and explain what the road will look like.

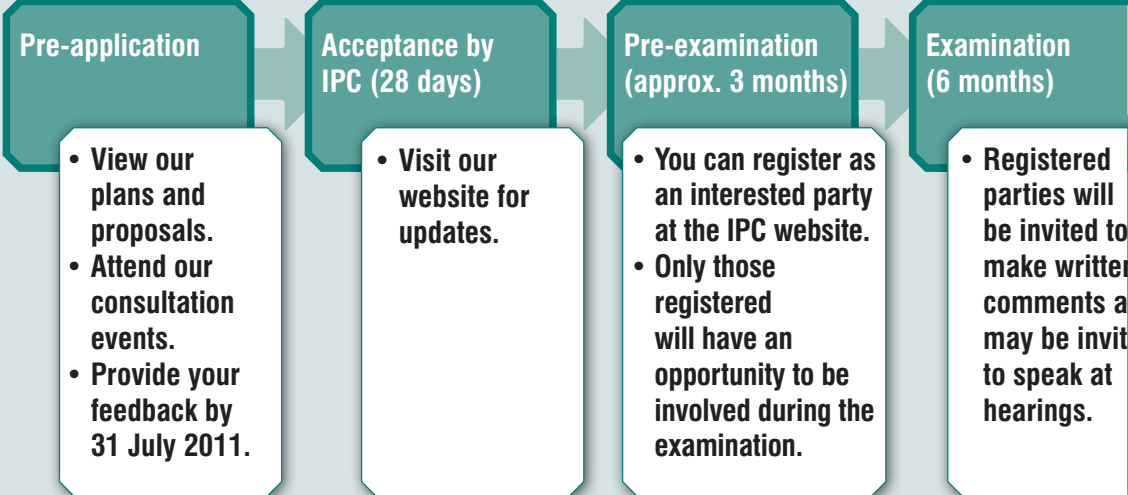
We are holding a series of open exhibitions where our proposals and most importantly the changes to the approved scheme will be displayed.

What you can expect

At the exhibitions the design and construction team will be available to answer any questions you may have. We will also have people at the events to listen and make note of your comments or suggestions which will then be taken away, reviewed, and if appropriate, incorporated into the design before an application is made to the IPC.

You can also write in or email your comments - see panel opposite.

The IPC Process – How you can be involved



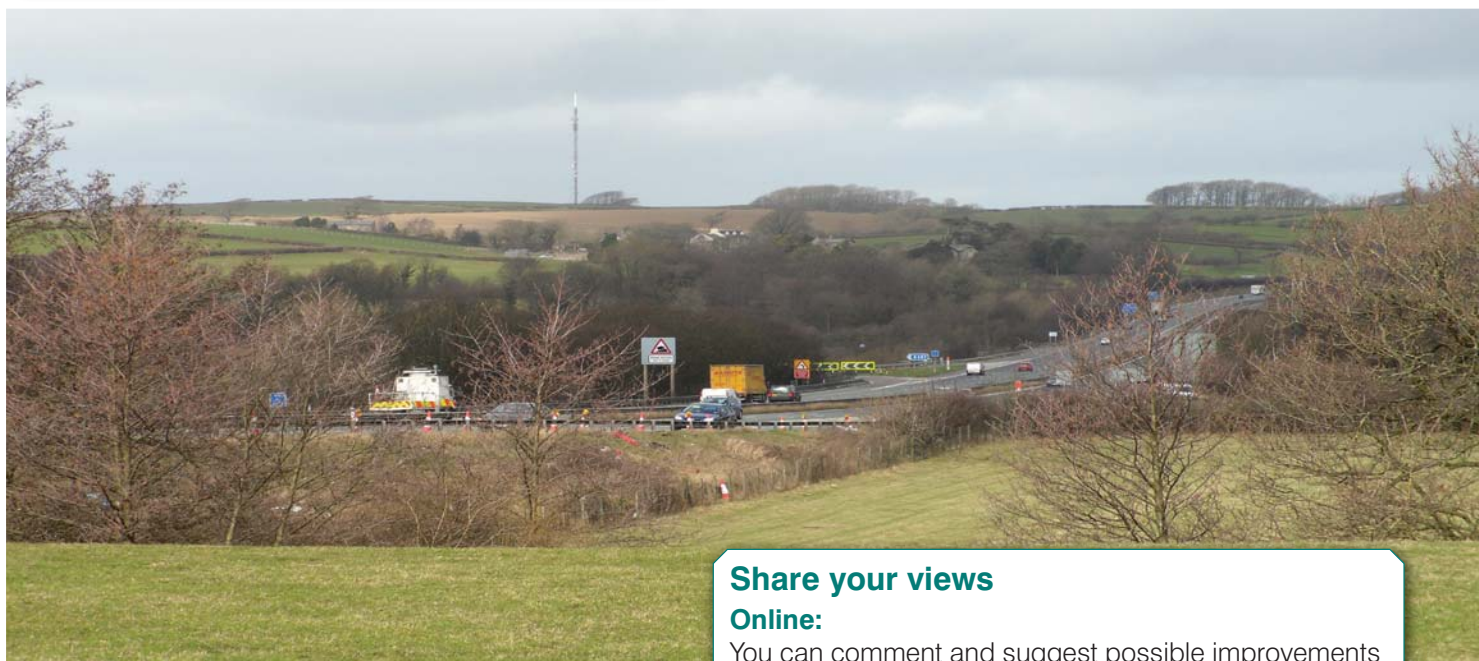


Date	Time	Venue
Thursday 9 June	2.30pm- 7.30pm	Memorial Hall , Hanging Green Lane, Slyne-with-Hest, LA2 6JB
Friday 10 June	2.30pm- 7.30pm	Lune Park Children's Centre , Ryelands Park, Owen Road, LA1 2LN
Monday 13 June	11.30am- 4.30pm	Cannon Hygiene , Northgate, White Lund Industrial Estate, LA3 3BJ
Tuesday 14 June	2.30pm- 7.30pm	The Centre@Halton , Low Road, Halton, LA2 6BN
Wednesday 15 June	2.30pm- 7.30pm	Torrisholme Methodist Church Hall , Norwood Drive, LA4 6LT

View our consultation documents

As well as attending the exhibitions, you can also view the documents at the locations listed below from early June. Visit www.lancashire.gov.uk/heyshamlink or contact the county council on 0845 053 0011 for further details.

Council offices	Libraries	Parish Councils
<ul style="list-style-type: none"> Lancaster Town Hall Morecambe Town Hall Winckley House, Preston 	<ul style="list-style-type: none"> Lancaster Morecambe Halton Heysham Bolton-le-Sands Carnforth 	<ul style="list-style-type: none"> Caton with Littledale Halton with Aughton Heaton with Oxcliffe Slyne-with-Hest



Share your views

Online:

You can comment and suggest possible improvements at www.lancashire.gov.uk/heyshamlink. Consultation documents will be available from the website from early June, giving you an opportunity to consider any specific areas you would like to discuss or comment on before the consultation events.

These documents include our environmental information, consultation strategy and computer generated images of the proposed road.

Alternatively, you can:

Write to us: Heysham to M6 Link
Lancashire County Council, PO Box 100,
County Hall, Preston, PR1 0LD

Email us: heyshamtom6link@lancashire.gov.uk

Call us: 0845 053 0011

**Decision
(6 months)**

• Visit our website for details of the decision made by the IPC.

**Post decision
(6 weeks max)**

• Following the IPC decision, there is an opportunity for a legal challenge to be lodged.

ed
ill
d to
itten
ts and
nvited
at



Feedback – Keeping you informed

As part of the application the county council will submit a consultation report which will incorporate your suggestions, including any changes made to the design resulting from your comments. It will also outline reasons why some suggestions may not be included. This report will be available to view on our website and in the same locations used during the consultation period (see overleaf).

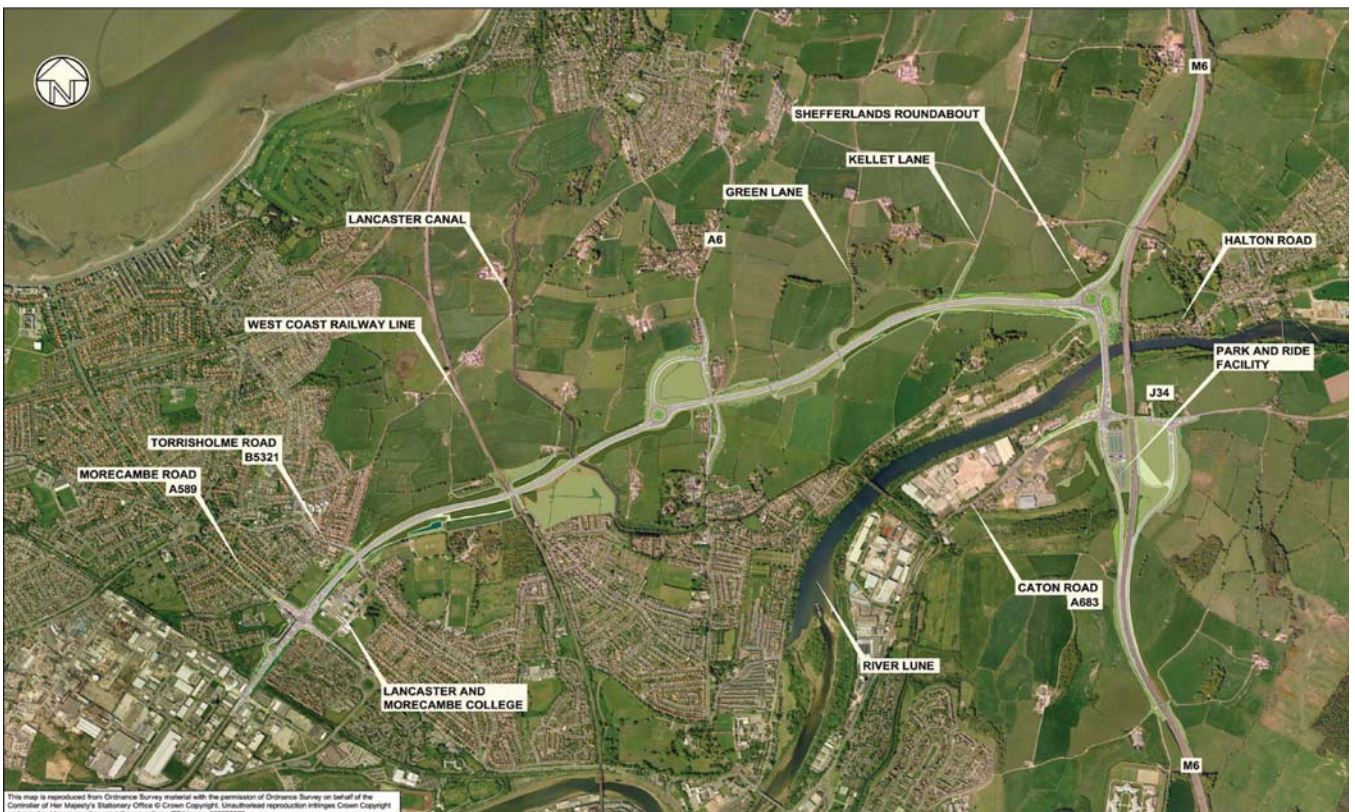


Your contribution will have helped shape the county council's application to the IPC. The IPC will then have 28 days to accept the proposals before they enter into an examination process.

IPC as an interested party (the county council cannot register you). You will then be kept informed of progress and have an opportunity to be involved.

Whilst anyone can be involved in the consultation, to participate in the examination of the application once it has been submitted, you must register with the

You can only register after the IPC have accepted the application and you must register directly with the IPC through their website: www.infrastructure.independent.gov.uk/heysham-to-m6-link-road



The closing date for comments to be received as part of the consultation is 31 July 2011.

www.lancashire.gov.uk/heyshamlink